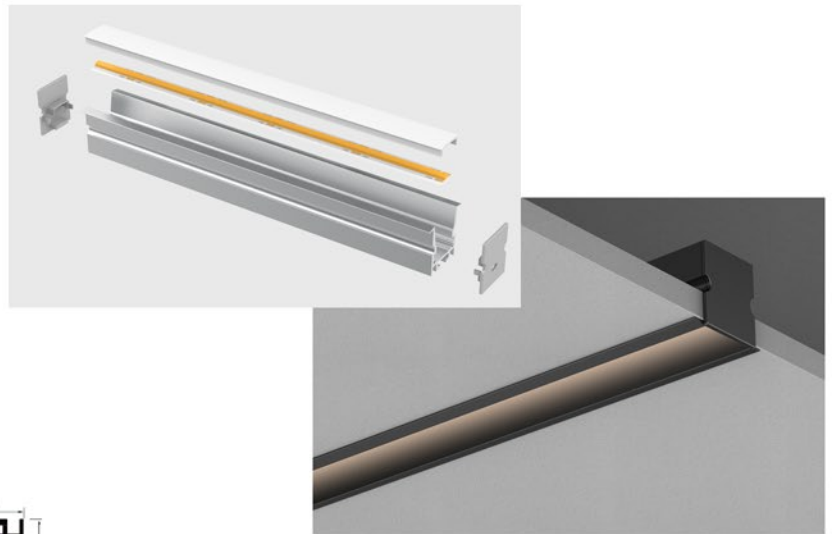


LP2926

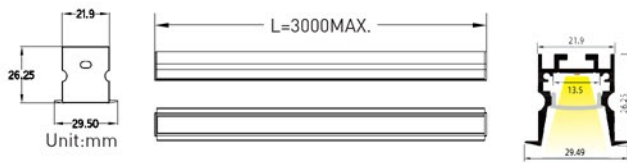


SPECIFICATIONS:

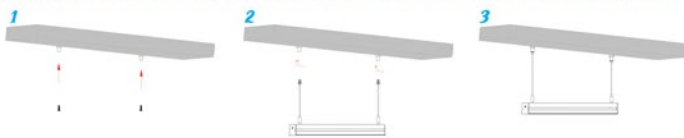
Material:	AL6063-T5
Surface:	Anodized/ Painting
PC cover:	Diffuser /Transparent /Opal/Black
Power:	9.6W/m
Input voltage:	12VDC/24VDC
Led Qty:	320LEDs/m (COB)
Lighting source width:	10mm
Led Qty:	120LEDs/m (SMD2835)
Lighting source width:	10mm
Available lengths:	0.5-3m
Application:	Commercial lighting / Indoor lighting



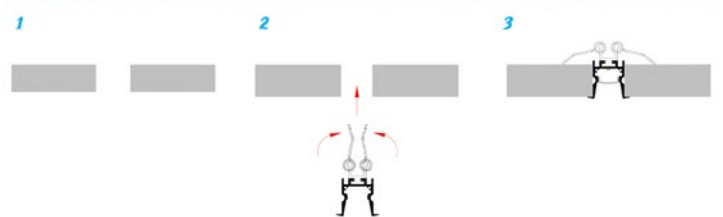
SIZE:



Pendent



Embedded



APPLICATIONS:



ACCESSORIES:

Accessory				
Art-No	Picture	Discription	Material	Color
292601		Alum case	AL 6063-T5	Silver
2926W		Alum case	AL 6063-T5	White
2926B		Alum case	AL 6063-T5	Black
2926G		Alum case	AL 6063-T5	Gold
1707D2		Cover	PC	Transparent
1707D3		Cover	PC	Opal
1707D4		Cover	PC	Diffuser
1707DB		Cover	PC	Black
29268		End cap	Hole	White
29269		End cap	W/O hole	White
LS5270SDZJ		Pendant	Stainless steel	Silver
2520S		Clip	Stainless steel	Silver
ACC-2PIN-10MM-X		Mini-strip connector	PC	Transparent
ACC-COB-4PIN-10MM-X		Mini-strip connector	PC	Transparent
ACC-SMD-2PIN-10MM-X		Mini-strip connector	PC	Transparent
ACC-SMD-3PIN-10MM-X		Mini-strip connector	PC	Transparent
ACC-SMD-4PIN-10MM-X		Mini-strip connector	PC	Transparent

Art-No	Picture	Accessory
LSSC241030 COB-24V-320-10mm		
LSSS241027 SMD-24V-120-10mm		