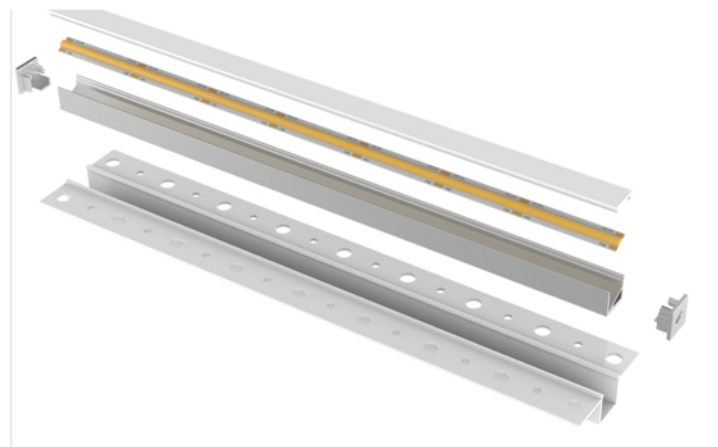


# LP1212D-1

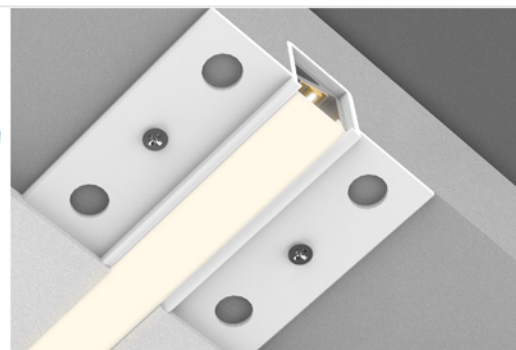
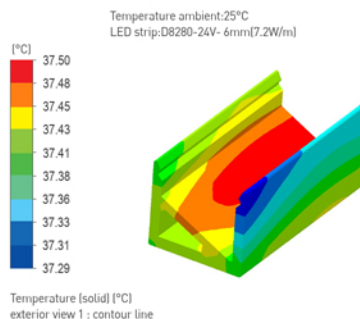
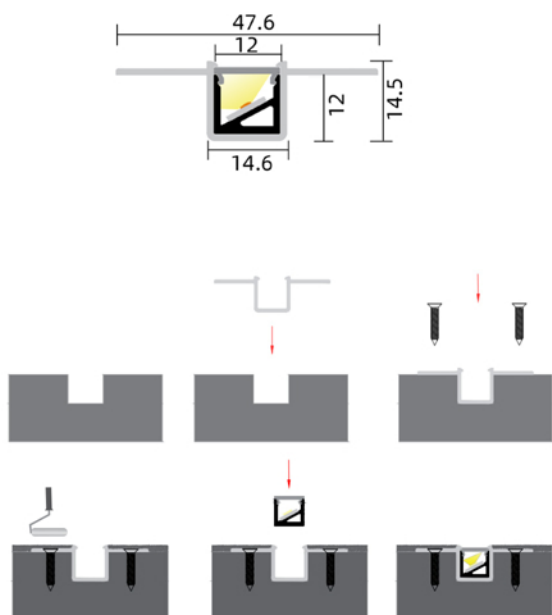


## SPECIFICATIONS:

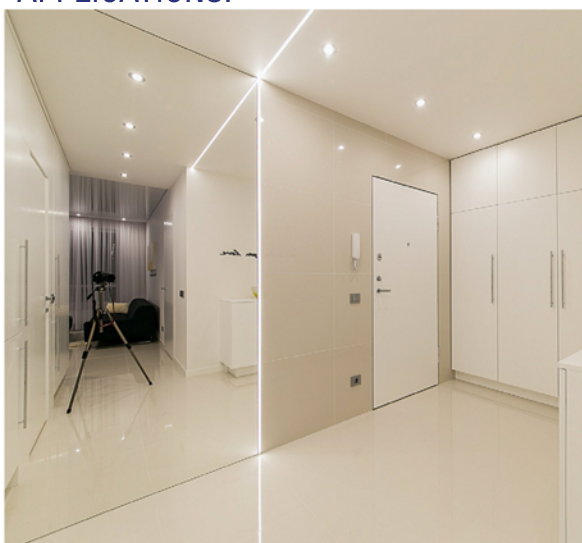
Material:	AL6063-T5
Surface:	Anodized/ Painting
PC cover:	Diffuser /Transparent /Opal/Black
Power:	7.2 W/m
Input voltage:	12VDC/24VDC
Led Qty:	320LEDs/m (COB) 120LEDs/m (SMD2835)
Lighting source width:	8MM 8MM
Available lengths:	0.5-3m
Application:	Indoor lighting/ furniture lighting



## SIZE:



## APPLICATIONS:



COVER	Trans/Opal/Diffuser	1212D2/1212D3 /1212D4	
COVER	Black	1212DB	
END CAP	Hole W/O hole	1212D8/1212D9	

### LIGHTING SOURCE : COB



### LIGHTING SOURCE : SMD

