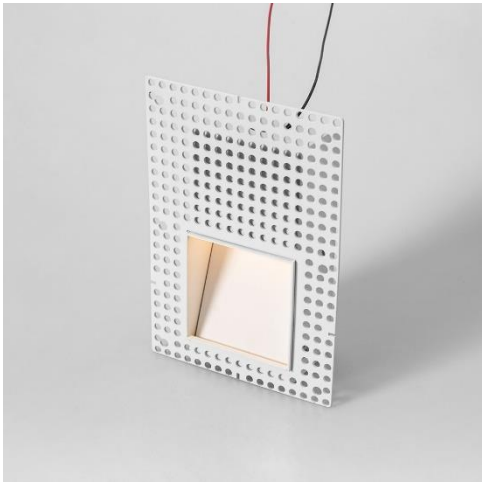
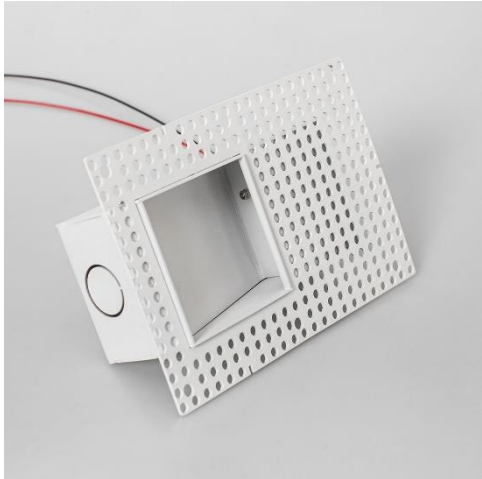


ISL-02

INDOOR RECESSED STEP LIGHT



SPECIFICATIONS

Model No.	ISL-02
Power Consumption(±10%)	3W
Input Voltage	24VDC
Luminous Flux (±10%)	120
Efficacy(4000K Ra70)	40lm/W
Correlated Color Temperature	4000K (2700, 3000K optional)
Color Rendering Index	90
UGR level	19
Product Dimension	136×94×40mm
Material	Aluminum Body
Finish	Powder Coating
Fixture Color	Black/White
IP Rating	IP20
Life Time of LED @Ta=25°C	50000 Hours
Warranty	5 Years
Application	Residential, Retail, Office, etc.

DIMENSIONS

