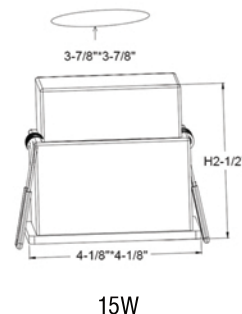
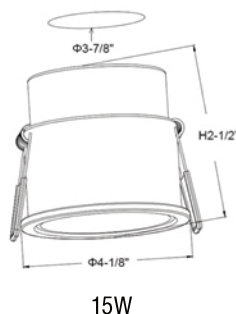
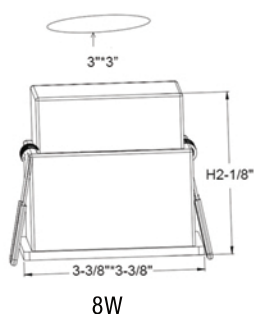
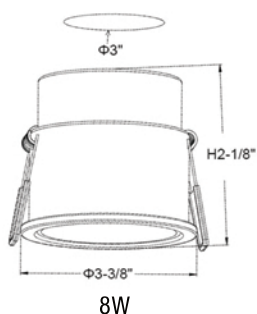


CASTOR

RECESSED TRIM DOWNLIGHT

PROMAX



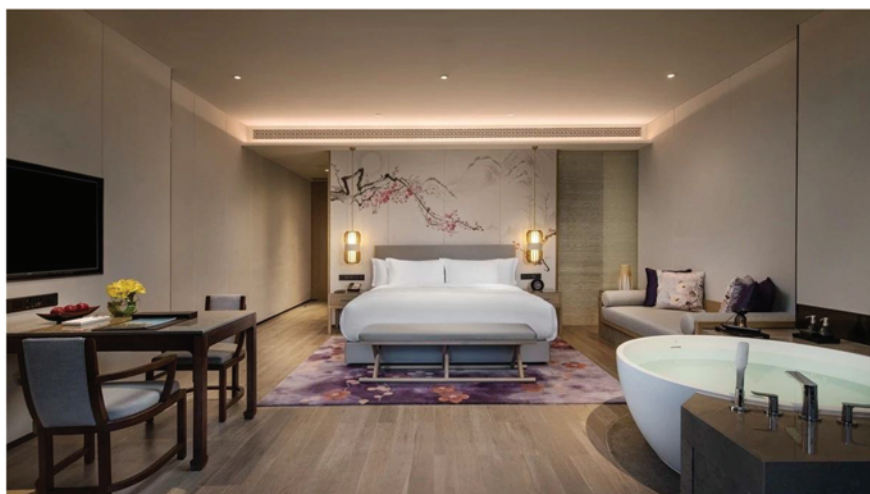
SPECIFICATIONS:

VOLTAGE:	110V-277V
WATTAGE:	8W/15W
OUTPUT LUMEN:	85LM/W
UGR	<16
CCT:	2700K/3000K/3500K/4000K
BEAM ANGLE:	15°/24°/38°
CRI:	90/95
DIMMABLE:	TRIAC/0-10V/DALI
HOUSING COLOR	BLACK/WHITE
REFLECTOR COLOR	BLACK/WHITE
IP:	20/44
LIFE SPAN:	50000 HOURS

APPLICATIONS:

ROUND/SQUARE RECESSED TRIM DOWNLIGHT
SUITABLE FOR GUEST ROOMS, CORRIDORS,
RESTAURANTS, MEETING ROOMS, CLUBS, ETC.
ALSO IP44 VERSION IS AVAILABLE FOR DAMP
LOCATIONS.

ETL CERTIFIED, FIVE YEARS WARRANTY.



ORDERING INFORMATION:

EXAMPLE: PM-CASTOR-S-8-2700-24-90-T-20-W-W

SERIES	TYPE	WATTS	COLOR TEMP.	BEAM ANGLE	CRI	DIMMING	IP	FRAME COLOR	REFLECTOR COLOR
PM-CANOPUS	R: Round	8	2700	15	90	T: Triac	20	W: White	W: White
	S: Square	15	3000	24	95	V: 0-10V	44	B: Black	B: Black
			3500	38		D: Dali			
			4000						

120/277VAC, 85LM/W

PREMIER

3740 William St, Burnaby, BC V5C 3H7

Phone: +1 (604) 294-2334, Toll free: +1 (877) 294-2334, Fax: +1 (604) 294-2126

www.premierlight.ca

PROMAX CASTOR

LAST UPDATE: JULY, 2023

PAGE 1 of 1